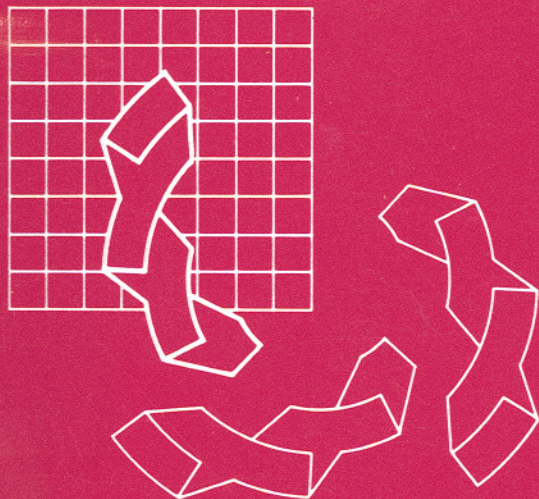


JOURNAL OF COMPUTATIONAL AND APPLIED MATHEMATICS



**Special Issue: Proceedings of the
International Conference on
Recent Advances in Computational Mathematics
(ICRACM 2001), Matsuyama, Japan,
10–13 October 2001**

Guest Editors

G. Alefeld

X. Chen

T. Yamamoto

Volume 152, Numbers 1–2, Pages 1–614
1 March 2003

AVAILABLE AT

WWW.MATHEMATICSWEB.ORG

POWERED BY SCIENCE @ DIRECT®

NORTH-HOLLAND

hairt 2003

**JOURNAL OF
COMPUTATIONAL AND
APPLIED MATHEMATICS**

Volume 152, Numbers 1-2 (2003)

JOURNAL OF COMPUTATIONAL AND APPLIED MATHEMATICS

Principal Editors

- M.J. Goovaerts, Centrum voor Verzekeringwetenschap, Katholieke Universiteit Leuven, Huis Eygen Heerd, Naamsestraat 69, B-3000 Leuven, Belgium
T. Mitsui, Graduate School of Human Informatics, Nagoya University, Nagoya 464-8601, Japan
P. Monk, Unidel Chair Professor, Department of Mathematical Sciences, University of Delaware, 501 Ewing Hall, Newark, DE 19716-2555, USA
L. Wuytack, Departement Wiskunde en Informatica, Universitaire Instelling Antwerpen, Universiteitsplein 1, B-2610 Antwerpen (Wilrijk), Belgium

'Letter Section' Editors

- B. Sommeijer, Centrum voor Wiskunde en Informatica, Postbus 94079, 1090 GB Amsterdam, Netherlands
L. Reichel, Department of Mathematics, Kent State University, Kent, OH 44242-0001, USA

Associate Editors

- O. Axelsson, *Katholieke Universiteit Nijmegen, Netherlands*
C.T.H. Baker, *University of Manchester, UK*
C. Brezinski, *Université de Lille, France*
H. Brunner, *Memorial University of Newfoundland, St. John's, Canada*
Chr. Budd, *University of Bath, UK*
C.W. Gear, *NEC Research Institute, Princeton, NJ, USA*
W.B. Gragg, *Naval Postgraduate School, Monterey, CA, USA*
M.H. Gutknecht, *Eidgenössische Technische Hochschule, Zürich, Switzerland*
A. Hadjidimos, *Purdue University, West Lafayette, IN, USA*
L.Gr. Ixaru, *Institute of Physics and Nuclear Engineering, Bucharest, Romania*
R. Jeltsch, *Eidgenössische Technische Hochschule, Zürich, Switzerland*
D.P. Laurie, *University of Stellenbosch, South Africa*
F.G. Lether, *University of Georgia, Athens, GA, USA*
T.-T. Li, *Fudan University, Shanghai, China*
T. Lyche, *University of Oslo, Norway*
M. Mori, *Tokyo Denki University, Saitama, Japan*
M.T. Nakao, *Kyushu University, Fukuoka, Japan*
J.T. Oden, *University of Texas, Austin, TX, USA*
J. Olinger, *Stanford University, CA, USA*
N. Papamichael, *University of Cyprus, Nicosia, Cyprus*
S.T. Rachev, *University of California, Santa Barbara, CA, USA*
M.N. Spijker, *Rijksuniversiteit Leiden, Netherlands*
M. Suri, *University of Maryland, Baltimore, MD, USA*
K. Tanabe, *Institute of Statistical Mathematics, Tokyo, Japan*
L.N. Trefethen, *Oxford University Computing Laboratory, Oxford, UK*
H. van der Vorst, *Universiteit Utrecht, Netherlands*
P. van Dooren, *Université Catholique de Louvain, Belgium*
G. Vanden Berghe, *University of Gent, Belgium*
S. Vandewalle, *Katholieke Universiteit Leuven, Belgium*
R.-H. Wang, *Dalian University of Technology, China*
J. Wimp, *Drexel University, Philadelphia, PA, USA*
R.S.C. Wong, *City University of Hong Kong, China*

Aims and Scope

The *Journal of Computational and Applied Mathematics* publishes original papers of high scientific value in all areas of applied mathematics. The main interest of the Journal is on papers describing new computational techniques for solving real scientific problems. Also carefully tested algorithms are published.

The Journal will also concentrate on the interaction between different fields of applied mathematics. In this connection survey papers and bibliographies are published.

The Journal does not publish papers that are too technical or are of very specialized nature. The papers should be readily understood by readers whose speciality lies outside the subject area.

The 'Letter Section' contains short communications and comments of at most three journal pages, which are published as rapidly as possible.

Advertising information. Advertising orders and enquiries can be sent to: **USA, Canada and South America:** Mr Tino DeCarlo, The Advertising Department, Elsevier Science Inc., 360 Park Avenue South, New York, NY 10010-1710, USA; phone: (+1) (212) 633 3815; fax: (+1) (212) 633 3820; e-mail: t.decarlo@elsevier.com. **Japan:** The Advertising Department, Elsevier Science K.K., 9-15 Higashi-Azabu 1-chome, Minato-ku, Tokyo 106-0044, Japan; phone: (+81) (3) 5561 5033; fax: (+81) (3) 5561 5047. **Europe and ROW:** Commercial Sales Department, Elsevier Science Ltd., The Boulevard, Langford Lane, Kidlington, Oxford OX5 1GB, UK; phone: (+44) (1865) 843016; fax: (+44) (1865) 843976; e-mail: media@elsevier.com.

USA mailing notice: The *Journal of Computational and Applied Mathematics* (ISSN 0377-0427) is published semimonthly by Elsevier Science B.V. (P.O. Box 211, 1000 AE Amsterdam, The Netherlands). Annual subscription price in the USA US\$ 3625 (valid in North, Central and South America), including air speed delivery. Periodical postage rate paid at Jamaica, NY 11431.

USA POSTMASTER: Send address changes to *The Journal of Computational and Applied Mathematics*, Publications Expediting Inc., 200 Meacham Ave, Elmont, NY 11003.

AIRFREIGHT AND MAILING in the USA by Publications Expediting Inc., 200 Meacham Avenue, Elmont, NY 11003.

Principal Editors

M.J. Goovaerts, Centrum voor Verzekeringwetenschap, Katholieke Universiteit Leuven, Huis Eygen Heerd, Minderbroederstraat 5, B-3000 Leuven, Belgium

T. Mitsui, Graduate School of Human Informatics, Nagoya University, Nagoya 464-8601, Japan

P. Monk, Unidel Chair Professor, Department of Mathematical Sciences, University of Delaware, 501 Ewing Hall, Newark, DE 19716-2555, USA

L. Wuytack, Departement Wiskunde en Informatica, Universitaire Instelling Antwerpen, Universiteitsplein 1, B-2610 Antwerpen (Wilrijk), Belgium

'Letter Section' Editors

B. Sommeijer, Centrum voor Wiskunde en Informatica, Postbus 94079, 1090 GB Amsterdam, Netherlands

L. Reichel, Department of Mathematics, Kent State University, Kent, OH 44242-0001, USA

Associate Editors

O. Axelsson, Mathematisch Instituut, Faculteit der Wiskunde en Natuurwetenschappen, Katholieke Universiteit Nijmegen, Toernooiveld, 6525 ED Nijmegen, Netherlands

C.T.H. Baker, Department of Mathematics, University of Manchester, Oxford Road, Manchester, M13 9PL, UK

C. Brezinski, Laboratoire d'Analyse Numérique et d'Optimisation, Université des Sciences et Technologies de Lille, UFR de Mathématiques Pures et Appliquées, F-59655 Villeneuve d'Ascq Cedex, France

H. Brunner, Department of Mathematics and Statistics, Memorial University of Newfoundland, St. John's, Newfoundland, Canada A1C 5S7

Chr. Budd, Mathematical Sciences, University of Bath, Bath BA2 7AY, UK

C.W. Gear, NEC Research Institute, 4 Independence Way, Princeton, NJ 08540, USA

W.B. Gragg, Code MA Gr., Department of Mathematics, Naval Postgraduate School, Monterey, CA 93943, USA

M.H. Gutknecht, Seminar für Angewandte Mathematik, Eidgenössische Technische Hochschule, Rämistrasse 101, CH-8092 Zürich, Switzerland

A. Hadjidimos, Department of Computer Sciences, Purdue University, West Lafayette, IN 47907, USA

L.Gr. Ixaru, Department of Theoretical Physics, Institute of Physics and Nuclear Engineering, P.O. Box MG-6, Magurele, Bucharest, Romania

R. Jeltsch, Seminar für Angewandte Mathematik, Eidgenössische Technische Hochschule, Rämistrasse 101, CH-8092 Zürich, Switzerland

D.P. Laurie, Department of Mathematics, University of Stellenbosch, Private Bag X1, Matieland 7602, South Africa

F.G. Lether, Department of Mathematics, University of Georgia, Boyd Graduate Research Building, Athens, GA 30602-7403, USA

T.-T. Li, Department of Mathematics, Fudan University, Shanghai, China

T. Lyche, Institute of Informatics, University of Oslo, P.O. Box 1080, Blindern, 0316 Oslo 3, Norway

M. Mori, Department of Mathematical Sciences, Tokyo Denki University, Ishizaka, Hatoyama, Saitama 350-0394, Japan

M.T. Nakao, Graduate School of Mathematics, Kyushu University, Hakozaki, Fukuoka 812-8581, Japan

J.T. Oden, Texas Institute for Computational and Applied Mathematics, University of Texas, Taylor Hall 2.400, Austin, TX 78712, USA

J. Olinger, Department of Computer Science, Stanford University, Stanford, CA 94305, USA

N. Papamichael, Department of Mathematics and Statistics, University of Cyprus, P.O. Box 537, Nicosia, Cyprus

S.T. Rachev, Department of Statistics and Applied Probability, University of California, Santa Barbara, CA 93106-3110, USA

M.N. Spijker, Afdeling Wiskunde en Informatica, Rijksuniversiteit Leiden, Postbus 9512, 2300 RA Leiden, Netherlands

M. Suri, Department of Mathematics and Statistics, University of Maryland Baltimore County, Baltimore, MD 21228, USA

K. Tanabe, The Institute of Statistical Mathematics, 4-6-7 Minami-Azabu, Minato-ku, Tokyo 106, Japan

L.N. Trefethen, Oxford University Computing Laboratory, Oxford, UK

H. van der Vorst, Mathematisch Instituut, Universiteit Utrecht, P.O. Box 80010, 3508 TA Utrecht, Netherlands

P. van Dooren, Department of Mathematical Engineering, Université Catholique de Louvain, Bâtiment Euler, 4, avenue Georges Lemaitre, B-1348 Louvain-la-Neuve, Belgium

G. Vanden Berghe, Vakgroep Toegepaste Wiskunde en Informatica, University of Gent, Gent, Belgium B-9000

S. Vandewalle, Departement Computerwetenschappen, Katholieke Universiteit Leuven, Celestijnenlaan 200A, B-3001 Heverlee, Belgium

R.-H. Wang, Institute of Mathematical Sciences, Dalian University of Technology, Dalian 116024, China

J. Wimp, Department of Mathematics and Computer Science, Drexel University, Philadelphia, PA 19104, USA

R.S.C. Wong, Department of Mathematics, City University of Hong Kong, Hong Kong, China

JOURNAL OF COMPUTATIONAL AND APPLIED MATHEMATICS

Principal Editors

M.J. Goovaerts

T. Mitsui

P. Monk

L. Wuytack

Volume 152 (2003)



ELSEVIER

Amsterdam – London – New York – Oxford – Paris – Shannon – Tokyo

© 2003 Elsevier Science B.V. All rights reserved.

This journal and the individual contributions contained in it are protected under copyright by Elsevier Science BV, and the following terms and conditions apply to their use:

Photocopying

Single photocopies of single articles may be made for personal use as allowed by national Copyright laws. Permission of the Publisher and payment of fee is required for all other photocopying, including multiple or systematic copying, copying for advertising or promotional purposes, resale, and all forms of document delivery. Special rates are available for educational institutions that wish to make photocopies for non-profit educational classroom use.

Permissions may be sought directly from Elsevier Science via their home page (<http://www.elsevier.com>) by selecting 'Customer support' and then 'Permissions'. Alternatively you can send an e-mail to: permissions@elsevier.co.uk, or fax to: (+44) 1865 853333.

In the USA, users may clear permissions and make payments through the Copyright Clearance Center, Inc., 222 Rosewood Drive, Danvers, MA 01923, USA; phone (+1) (978) 7508400, fax: (+1) (978) 7504744, and in the UK through the Copyright Licensing Agency Rapid Clearance Service (CLARCS), 90 Tottenham Court Road, London W1P 0LP, UK; phone: (+44) 20 7631 5555; fax: (+44) 20 7631 5500. Other countries may have a local reprographic rights agency for payments.

Derivative Works

Subscribers may reproduce tables of contents or prepare lists of articles including abstracts for internal circulation within their institutions. Permission of the Publisher is required for resale or distribution outside the institution.

Permission of the Publisher is required for all other derivative works, including compilations and translations.

Electronic Storage or Usage

Permission of the Publisher is required to store or use electronically any material contained in this journal, including any article or part of an article.

Except as outlined above, no part of this publication may be reproduced, stored in a retrieval system or transmitted in any form or by any means, electronic, mechanical, photocopying, recording or otherwise, without prior written permission of the Publisher.

Address permissions requests to: Elsevier Science Global Rights Department, at the mail, fax and e-mail addresses noted above.

Notice

No responsibility is assumed by the Publisher for any injury and/or damage to persons or property as a matter of products liability, negligence or otherwise, or from any use or operation of any methods, products, instructions or ideas contained in the material herein. Because of rapid advances in the medical sciences, in particular, independent verification of diagnoses and drug dosages should be made.

Although all advertising material is expected to conform to ethical (medical) standards, inclusion in this publication does not constitute a guarantee or endorsement of the quality or value of such product or of the claims made of it by its manufacturer.

Orders, claims, and product enquiries: please contact the Customer Support Department at the Regional Sales Office nearest you:

New York: Elsevier Science, PO Box 945, New York, NY 10159-0945, USA; phone: (+1) (212) 633 3730 [toll free number for North American customers: 1-888-4ES-INFO (437-4636)]; fax: (+1) (212) 633 3680; e-mail: usinfo-f@elsevier.com

Amsterdam: Elsevier Science, PO Box 211, 1000 AE Amsterdam, The Netherlands; phone (+31) 20 4853757; fax: (+31) 20 4853432; e-mail: nlinfo-f@elsevier.com

Tokyo: Elsevier Science, 9-15 Higashi-Azabu 1-chome, Minato-ku, Tokyo 106-0044, Japan; phone: (+81) (3) 5561 5033; fax: (+81) (3) 5561 5047; e-mail: info@elsevier.co.jp

Singapore: Elsevier Science, 3 Killiney Road, #08-01 Winsland House I, Singapore 239519; phone: (+65) 6349 0200; fax: (+65) 6733 1510; e-mail: asiainfo@elsevier.com.sg

Rio de Janeiro: Elsevier Science, Rua Seta de Setembro 111/16 Andar, 20050-002 Centro, Rio de Janeiro- RJ, Brazil; Phone: (+55) (21) 509 5340; fax: (+55) (21) 507 1991; e-mail: elsevier@campus.com.br [Note (Latin America): for orders, claims and help desk information, please contact the Regional Sales Office in New York as listed above]

∞ The paper used in this publication meets the requirements of ANSI/NISO Z39.48-1992 (Permanence of Paper).

JOURNAL OF COMPUTATIONAL AND APPLIED MATHEMATICS

Special Issue

**Proceedings of the International Conference on
Recent Advances in Computational Mathematics
(ICRACM 2001)
Matsuyama, Japan, 10–13 October 2001**

Guest editors:

G. Alefeld

*Institut für Angewandte Mathematik, Universität Karlsruhe,
Karlsruhe 76128, Germany*

X. Chen

*Department of Mathematical System Science,
Hirosaki University, Hirosaki 036-8560, Japan*

T. Yamamoto

*Department of Information and Computer Science, School of Science and Engineering,
Waseda University, Tokyo 169-8555, Japan*



ELSEVIER

Amsterdam – London – New York – Oxford – Paris – Shannon – Tokyo

JOURNAL OF COMPUTATIONAL AND APPLIED MATHEMATICS

Volume 152, Numbers 1–2, 1 March 2003

Contents

Preface	xi
<i>G. Alefeld, V. Kreinovich and G. Mayer</i> On the solution sets of particular classes of linear interval systems	1
<i>A. Bermúdez, R. Rodríguez and D. Santamarina</i> Finite element approximation of a displacement formulation for time-domain elastoacoustic vibrations	17
<i>E.G. Birgin, I.E. Chambouleyron and J.M. Martínez</i> Optimization problems in the estimation of parameters of thin films and the elimination of the influence of the substrate	35
<i>T.-F. Chen and M.-C. Ke</i> Nonlinear SOR and mesh redistribution	51
<i>T. Coffey, R.J. McMullan, C.T. Kelley and D.S. McRae</i> Globally convergent algorithms for nonsmooth nonlinear equations in computational fluid dynamics	69
<i>Y. Dai, S. Kim and M. Kojima</i> Computing all nonsingular solutions of cyclic- n polynomial using polyhedral homotopy continuation methods	83
<i>J. Dong, J. Shi, S. Wang, Y. Xue and S. Liu</i> A trust-region algorithm for equality-constrained optimization via a reduced dimension approach	99
<i>Q. Fang</i> Convergence of finite difference methods for convection–diffusion problems with singular solutions	119
<i>J.A. Ford and S. Tharmlikit</i> New implicit updates in multi-step quasi-Newton methods for unconstrained optimisation	133
<i>K. Georg</i> A new exclusion test	147
<i>K. Hayashi, K. Onishi and Y. Ohura</i> Direct numerical identification of boundary values in the Laplace equation	161